

Style STT-B

The STT-B series temperature sensors with the connection head provided superior dust and moisture resistance. Widely applies in energy power engineering, food processing, medical research, furnace, pressure vessel, petrochemical processing, flow industry, plastic and textile production, air conditioning and refrigeration servicing.

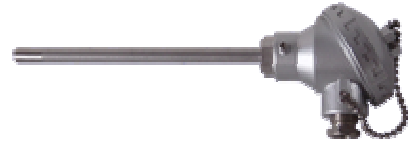
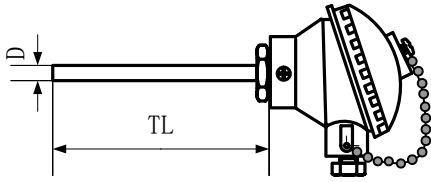
<p>B Connection Head Styles (See Table 9) P=Type P S=Type S L=Type L D=Type D G=Type G</p> <p>A Element, Double add-in D 1=Pt100 5=Pt500 10=Pt1000</p> <p>B Sheath O.D. (mm) 3=3.0 4=4.0 5=5.0 6=6.0 8=8.0 10=10 12=12 16=16</p> <p>C EL Dimension (mm) 100=100 200=200 300=300 400=400 500=500 Custom</p> <p>D Sheath Material 1=sus321 4=sus304 6=sus316 Custom</p> <p>E Leadwire 2=2-wire 3=3-wire 4=4-wire</p> <p>N Mounting fittings (See Table 8)</p> <table border="0"> <tr> <td>1 None</td> <td>2 Threaded Fixed Fitting 8=M8X1.25 12=M12X1.5 16=M16X1.5 20=M20X1.5 22=M22X1.5 27=M27X2 Custom See Addenda 2</td> <td>3 Removable Flange 1=Bolt Fitting 2=Compression Fitting</td> <td>4 Fixed Flange 1= φ 95 mm 2= φ 105mm 3= φ 115mm Custom See table 10</td> <td>5 Threaded Compression Fitting 1=M8X1.25 2=M10X1.5 3=M16X1.5 Custom See table 11</td> </tr> </table> <p>P Accuracy A=Class A B=Class B 1/3=Class 1/3B</p> <p>T Temperature Range (°C) 1=-200~100 2=-50~100 3=-50~200 4=-50~250 Custom</p> <p>S Special Requirements 0=None 2=Flexible Metal-Sheath 3=Erosion-proof Custom</p>	1 None	2 Threaded Fixed Fitting 8=M8X1.25 12=M12X1.5 16=M16X1.5 20=M20X1.5 22=M22X1.5 27=M27X2 Custom See Addenda 2	3 Removable Flange 1=Bolt Fitting 2=Compression Fitting	4 Fixed Flange 1= φ 95 mm 2= φ 105mm 3= φ 115mm Custom See table 10	5 Threaded Compression Fitting 1=M8X1.25 2=M10X1.5 3=M16X1.5 Custom See table 11	<p>STT-B</p> <p>A</p> <p>B</p> <p>C</p> <p>D</p> <p>E</p> <p>N</p> <p>P</p> <p>T</p> <p>S</p>
1 None	2 Threaded Fixed Fitting 8=M8X1.25 12=M12X1.5 16=M16X1.5 20=M20X1.5 22=M22X1.5 27=M27X2 Custom See Addenda 2	3 Removable Flange 1=Bolt Fitting 2=Compression Fitting	4 Fixed Flange 1= φ 95 mm 2= φ 105mm 3= φ 115mm Custom See table 10	5 Threaded Compression Fitting 1=M8X1.25 2=M10X1.5 3=M16X1.5 Custom See table 11		

- Note:** 1.The option should be filled the requirements directly.
 2. If no appointment TL=EL+150 or in the **Custom** option named the TL=EL+appointed length
 3.If there are over **one** requirements in this **S** option please use the “/” fill it in seriate

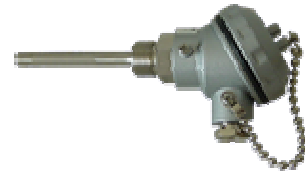
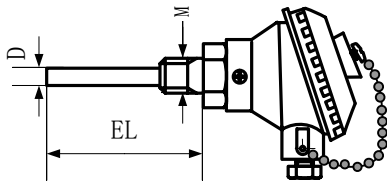
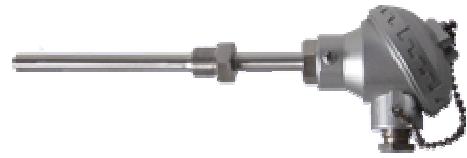
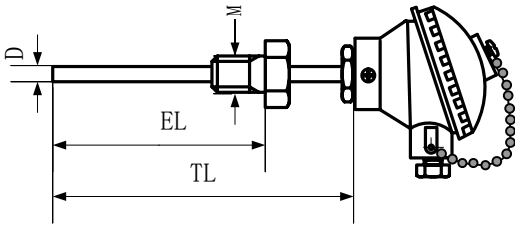
For Example STT-BP-A1-B6-C500-D1-E3-N2G1/2-PA-T3-S0
Style Code Pt100 O.D.=6mm EL=500mm sus321 3-wire Threaded Fixed FittingG1/2 Class A -50~200°C None

Outline drawing

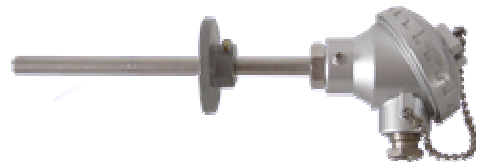
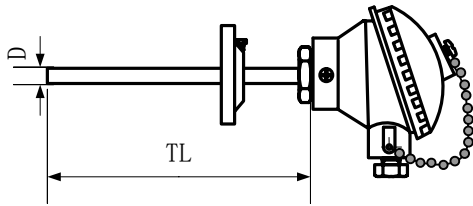
Actual picture



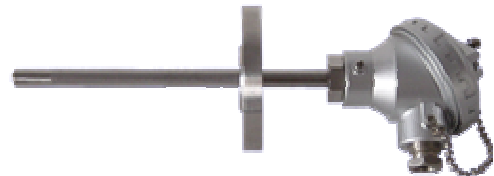
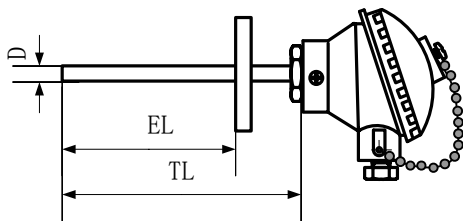
Type N1



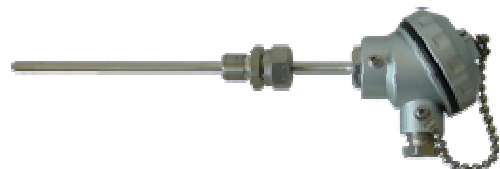
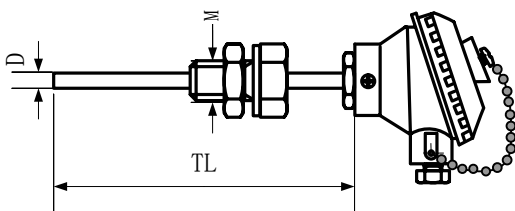
Type N2



Type N3



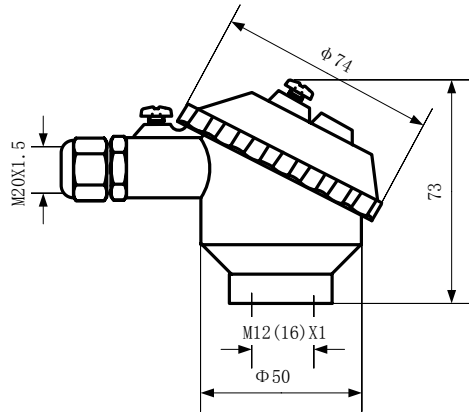
Type N4



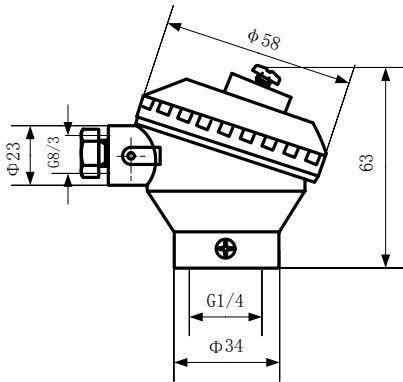
Type N5

Outline drawing

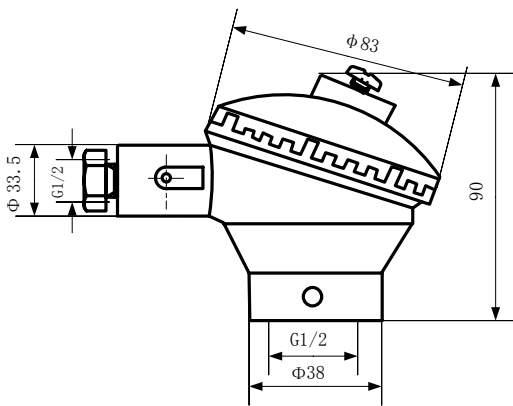
Actual picture



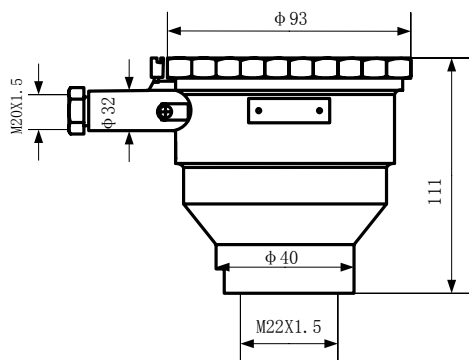
Type P



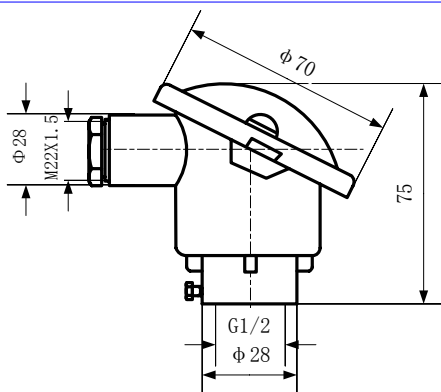
Type S



Type L



Type D



Type G