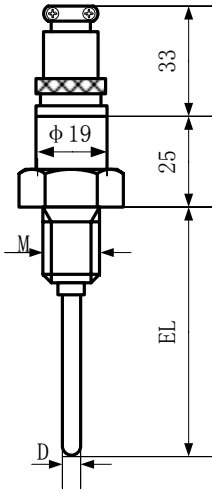
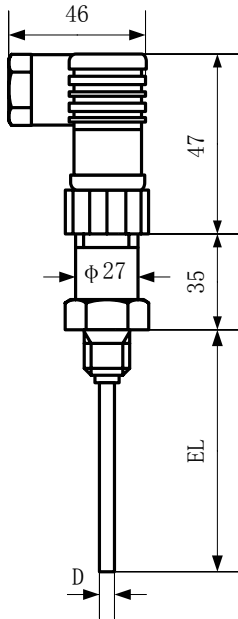


Style STT-C

The style STT-C series sensor be assembled with standard connector, the installation and maintenance are convenient, is suitable for medical instrument and the portable appliance



C1



C2

- STT-C
- C Connector**
 - 1=C1
 - 2=C2
 - A Element, Double add-in D**
 - 1=Pt100 5=Pt500 10=Pt1000
 - B Sheath O.D. (mm)**
 - 2=2.0 3=3.0 4=4.0 5=5.0
 - 6=6.0 8=8.0 ↻ Custom
 - C EL Dimension (mm)**
 - 30=30 40=40 50=50
 - 100=100 200=200 ↻ Custom
 - D Sheath Material**
 - 1=sus321 4=sus304 6=sus316 ↻ Custom
 - M Threaded Fitting M (See addenda 2)**
 - 5=M5X0.8 8=M8X1.25 10=M10X1.5 12=M12X1.5
 - 16=M16X1.5 20=M20X1.5 ↻ Custom
 - E Leadwire construction**
 - Wire
 - 2=2-wire
 - 3=3-wire
 - 4=4-wire
 - P Accuracy**
 - A=Class A B=Class B 1/3B=Class 1/3B
 - T Temperature Range (°C)**
 - 1=-200~100 2=-50~100 3=-50~200 4=-50~250 ↻ Custom
 - S Special Requirements**
 - 0=None 2=Flexible Metal-Sheath 3=Erosion-proof ↻ Custom

Note: 1.The option should be filled the requirements directly.

2. If there are over **one** requirements in this **S** option please use the “/” fill it in seriate

For Example STT-C1---A1---B5---C200---D6---M16---E3---PB---T2---S0
 C1 connector Pt100 O.D.=5mm EL=200mm sus316 Threaded fitting M16X1.5 3-wire Class B -50~100°C None