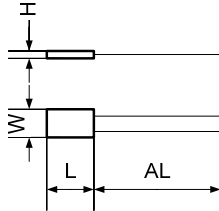


STTT-F series thermocouple

STTT-F series thermocouple is encapsulated by metal shell, filled with heat conductive material and sealing material. It is suits to measure the surface temperature



STTT-F A B F L P T W S

F Style Code _____

A Calibration _____
 K=Type K E=Type E J=Type J T=Type T

B Sheath Size (mm) _____
 W L H
 1 = 7 7 2
 2 = 10 12 3.5

F Lead Wire Type _____
 2=Teflon 3=Stainless steel overbraid

L Lead Wire Length AL (mm) _____
 1=1000 2=2000 3=3000 ☞ Customized

P Accuracy _____
 I=Class I II=Class II

T Temperature Range (°C) _____
 5=-200~200 6=0~200 7=0~400 ☞ Customized

W Lead Wire Termination _____
 0=None 1=M4 lugs ☞ Customized

S Special Requirements _____
 0=None 1=Spring strain relief 6=Grounded junction ☞ Customized

- Note: 1. The 'Customized' option should be filled your requirements directly
 2. 'Special Requirements' if there are any more options, please use the '/' fill it in seriate
 3. Standard products for supply are Ungrounded junction type.

Order example: STTT-F-----AT-----B1-----F2-----L1500-----P I -----T6-----W0-----S0
Style Code Type T 7x7x2 Teflon AL=1500mm Class I 0~200°C None None